

高度-决定视野

态度-决定未来

深州天汇金属制品有限公司

地址：河北省衡水市深州市唐奉镇南大隆新村路南

电话：0318-7530597 13785870122 13303180597

传真：0318-7530597

网址：www.wire-mesh-supplier.com

邮箱：bensonhebei@163.com



Shenzhou Tianhui Metal Products Co. Contacts :

Add: South Of Daituan Xincun, Tangfeng, Shenzhou City, Hebei China.

Tel : 0086 318 753 0597 13785870122 13303180597

Fax : 0086 318 753 0597

Http : www.wire-mesh-supplier.com

E-mail: bensonhebei@163.com



深州天汇金属制品有限公司

SHENZHOU TIANHUI METAL PRODUCTS CO.,LTD



公司简介

INTRODUCTION >>>

品质成就

Quality Success

卓越

Shenzhou Tianhui Metal Products Co.,Ltd. started since 2015, is a leading wire mesh manufacturer, which located in Shenzhou City Hebei Province, which committed to welded wire mesh and woven wire mesh, with rich experience and advanced equipment on wire mesh products such as perforated metal, expanded metal, bar grating, GI wire mesh, welded wire mesh, wire mesh fence, metal conveyor belt, barbed wire, razor ribbon, BBQ grill, glass reinforcing mesh...

深圳天汇金属制品有限公司，成立于2016年，是一家专业的丝网产品制造商，公司位于河北省衡水市深州市唐奉镇南大疃新村路南，我们一直致力于各类丝网产品的研究和生产，主要产品有冲孔筛板、钢格栅板、电焊网、不锈钢滤网、钢板网、护栏网、烤肉网、铁刺丝、矿筛网、镀锌铅网、窗纱等。

深圳天汇金属制品有限公司，是一家股份制民营企业，拥有先进的生产设备和熟练的产业工人，为我们的顾客提供高标准质量水平的产品和服务是我们一直坚持不懈追求的目标，开拓进取，精益求精，是我们对自己的要求，合作、双赢、让我们携手，让我们共赢！



冲孔网 PERFORATED METAL MESH

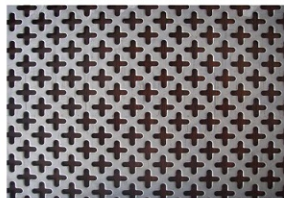
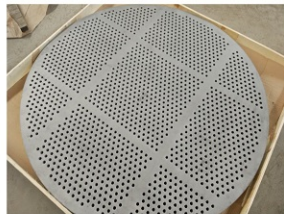
冲孔网又名冲孔板、多孔板、圆孔网、矿筛网、机筛网等。顾名思义是指表面有各类形状孔型的金属板产品用途广泛应用于化工机械、制药设备、食品饮料机械、烟卷机械、收割机、干洗机、烫台、消音设备、制冷设备（中央空调）音箱、工艺品制作、造纸、液压配件、滤清设备等各行各业。孔型长方孔、方孔、菱形孔、圆孔、六角形孔、十字孔、三角孔、长圆孔、长菱形孔、梅花孔、鱼鳞孔、图案孔、五角星形孔、不规则孔、起鼓孔等。

规格：板厚0.4mm-15mm，孔径0.5mm-50mm，规格尺寸1米X2米，1.22米X2.44米等。

Perforated metal is sheet metal or metal coil that has been punched to create a pattern of round holes, slots, or decorative shapes. Materials to be perforated available in various, such as stainless steel, cold rolled steel, galvanized steel, brass, aluminum etc.

All our perforating press with CNC controlled, it is easy to adjust the feeding distance, just input the program you want, then it working automatically, the advantage of CNC much, it is accurate and high speed. we have different moulds in stock, and can supply almost any type of holes and designs as your request, perforation with no limit.

Perforated metal widely used in different applications, such as food industry, rice, oil industry, decoration for construction, chemical filters, safe cover for machines...





钢格板 STEEL GRATING

钢格板是用承载扁钢和横杆按照一定的间距进行正交组合，在高压电阻焊机上焊接而成原板，经切割、切口、开孔、包边等工序深加工而成客户要求的成品。

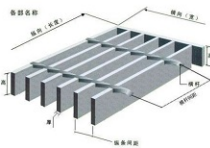
特点：高强度，轻结构：牢固的网格压焊结构使其具有高承载，结构轻，便于吊装，外型美观，经久耐用。

用途：广泛应用于石油石化、电厂、水厂、污水处理厂、市政工程、环卫工程等领域的平台、走道、栈桥、沟盖、井盖、梯子、围栏、护栏等。

Bar Grating produced by bearing bars welded together at different distance to perpendicular cross bars to form a load-bearing panel. Panels are manufactured by welding, locked by swaging, or press-locked processes. A typical panel configuration has bearing bars that are spaced 30mm pitch with perpendicular cross bars spaced 100mm pitch. Other spacings are available to meet your loading and open area requirements.

It is available in a wide selection of panel sizes; bar sizes and spacings; bar shapes; and material types. The most popular style is Welded Bar Grating, our normal stock size is 1meter x 6meter, different specs of bar grating can meet almost any load bearing or weight requirement and is the most durable grating for rugged applications. which is a good choice for strength, safety, and long-term cost.

Material 材质	Bearing Bar 承重扁钢	Bearing Bar pitch 扁钢间距	Crossing Bar 麻花钢	Crossing Bar pitch 麻花钢间距	Stock Size 常规尺寸	Finished Type 处理方式
Q235	25X3mm	20mm	6mm	50mm	1mX6m	painted 镀锌
A36	25X4mm	25mm	8mm	80mm		
16Mn	30X3mm	30mm	10mm	100mm		
	30X4mm	40mm	12mm			
	30X5mm	50mm				
	40X4mm	60mm				



不锈钢网 STAINLESS STEEL WIRE MESH

材料：302、304、304L、316、316L等不锈钢丝。

编织及特点：平织、斜织、密纹编织。具有耐蚀、耐酸、耐碱、耐磨损等特性。

用途：用于矿业、化工、食品、石油、医药、机械制造等行业。

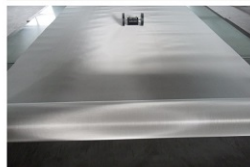
Stainless Steel Woven Wire Mesh Rolls

Fabrication type: plain weave, twill weave, dutch weave.

Standard length: 30m

Mesh per line inch: 1- 600mesh(plain & twill), 12- 2800mesh(dutch)

Standard width: 1000mm, 1200mm, 1535mm



MESH 目数	WIRE DIAMETER 丝径		OPENING 孔径	
	英寸 INCH	毫米 MM	英寸 INCH	毫米 MM
1X1	0.08	2.03	0.92	23.37
2X2	0.063	1.6	0.437	11.1
3X3	0.054	1.37	0.279	7.09
4X4	0.047	1.6	0.187	4.75
4X4	0.047	1.19	0.203	5.16
5X5	0.041	1.04	0.159	4.04
6X6	0.035	0.89	0.132	3.35
8X8	0.028	0.71	0.097	2.46
10X10	0.025	0.64	0.078	1.91
10X10	0.02	0.51	0.08	2.03
12X12	0.023	0.584	0.06	1.52
12X12	0.02	0.508	0.063	1.6
14X14	0.023	0.584	0.048	1.22
14X14	0.02	0.508	0.051	1.3
16X16	0.018	0.457	0.0445	1.13
18X18	0.017	0.432	0.0386	0.98
20X20	0.02	0.508	0.03	0.76
20X20	0.016	0.406	0.034	0.86
24X24	0.014	0.356	0.0277	0.7
30X30	0.013	0.33	0.0203	0.52
30X30	0.012	0.305	0.0213	0.54
30X30	0.009	0.229	0.0243	0.62
36X36	0.011	0.279	0.0176	0.45
40X40	0.01	0.254	0.015	0.38
50X50	0.009	0.229	0.011	0.28
50X50	0.008	0.203	0.012	0.31
60X60	0.0075	0.191	0.0092	0.23
60X60	0.007	0.178	0.0097	0.25
70X70	0.0065	0.165	0.0078	0.2
80X80	0.0065	0.165	0.006	0.15
80X80	0.0055	0.14	0.007	0.18
90X90	0.005	0.127	0.0061	0.16
100X100	0.0045	0.114	0.0055	0.14
100X100	0.004	0.102	0.006	0.15
100X100	0.0035	0.089	0.0065	0.17
110X110	0.004	0.1016	0.005	0.1295
120X120	0.0037	0.094	0.0064	0.1168
150X150	0.0026	0.066	0.0041	0.1041
160X160	0.0025	0.0635	0.0038	0.0965
180X180	0.0023	0.0584	0.0033	0.0838
200X200	0.0021	0.0533	0.0029	0.0737
250X250	0.0016	0.0406	0.0024	0.061
270X270	0.0016	0.0406	0.0021	0.0533
300X300	0.0015	0.0381	0.0018	0.0457
325X325	0.0014	0.0356	0.0017	0.0432
400X400	0.001	0.0254	0.0015	0.37
600X600	0.001	0.0254	0.001	0.0254
635X635	0.0008	0.0203	0.0008	0.0203



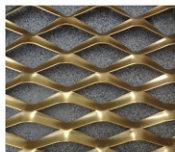
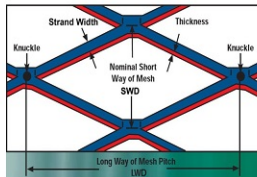
钢板网 EXPANDED METAL MESH

钢板网是根据拉伸网选用材质而命名,如不锈钢材质拉伸网称不锈钢拉伸网,铝合金材质拉伸网称铝板拉伸网,低碳钢材质拉伸网称低碳钢拉伸网,钢板拉伸网即属于钢板网系列,又属于拉伸网系列。

Expanded metal is a type of metal stock made by shearing a metal plate in a press, so that the metal stretches, leaving diamond-shaped voids surrounded by interlinked bars of the metal. The most common method of manufacture is to simultaneously slit and stretch the material with one motion.

expanded metal is used in:
grating
in outdoor furniture (e.g. benches)
fencing
facade of building
plastering
protect cover

Expanded metal is often used for architectural details and finds use in security applications such as in the walls of a Sensitive Compartmented Information Facility because, in heavier grades, it is difficult to breach without heavy cutting equipment or explosives.



电焊网 WELDED WIRE MESH

材料: 优质低碳钢丝、不锈钢丝等。

种类: 电镀锌电焊网、热镀锌电焊网、PVC涂塑电焊网、不锈钢电焊网等。

特性: 网面平整、网目均匀、焊点牢固、具有极强的防腐、防锈、抗氧化等特点。

用途: 广泛用于工业、农业、建筑、交通运输、采矿、球场、草坪、养殖等行业的围栏、装饰、机械防护等。

Material available: low carbon steel wire, stainless steel wire.

Wire size: 0.5-2.0mm

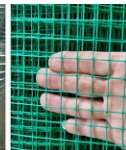
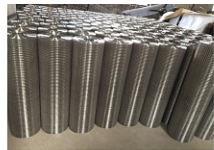
Mesh apertures: 25mm to 200mm

Size: 1mX30m, 1.22mX30m

Types: electro galvanized welded wire mesh, hot dipped galvanized welded wire mesh, PVC coated welded wire mesh, stainless steel welded wire mesh.

Application: widely used in

industry, agriculture, construction, transportation, mining, finish/ animal raising etc.



英寸inch	网孔Hole 毫米 (mm)	丝径Wire Diameter (BWG)
1/4"X1/4"	6.4mmX6.4mm	22, 23, 24
3/8"X3/8"	10.6mmX10.6mm	19, 20, 21, 22
1/2"X1/2"	12.7mmX12.7mm	16, 17, 18, 19, 20, 21, 22, 23
5/8"X5/8"	16mmX16mm	18, 19, 20, 21
3/4"X3/4"	19.1mmX19.1mm	16, 17, 18, 19, 20, 21
1"X1/2"	25.4mmX25.4mm	16, 17, 18, 19, 20, 21
1-1/2"X1-1/2"	38mmX38mm	14, 15, 16, 17, 18, 19
1"X2"	25.4mmX25.4mm	14, 15, 16
2"X2"	50.8mmX50.8mm	12, 13, 14, 15, 16
2"X3"	50mmX75mm	12, 13, 14, 15, 16
3"X3"	75mmX75mm	12, 13, 14, 15, 16
2"X4"	50mmX100mm	12, 13, 14
4"X4"	100mmX100mm	12, 13, 14

Roll width: 3', 4', 5', 6' etc. Roll length: 100'



电焊网片 WELDED WIRE MESH PANEL

电焊网片是一种采用优质低碳钢丝排焊而成，然后再冷镀(电镀锌、热镀锌、PVC包塑等)表面钝化、塑化处理、网面平整、网目均匀、焊点牢固、局部机加工性能良好、稳定、防腐、防蚀性好网格状丝网产品。

优点：结构简单、生产快速、美观实用、便于运输等。

用途：主要用于超市货架，建筑网筋，育苗网箱等。

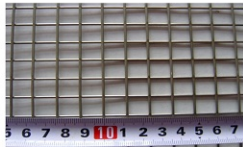
Welded wire mesh is an electric fusion welded prefabricated joined grid consisting of a series of parallel longitudinal wires with accurate spacing welded to cross wires at the required spacing.

Machines are used to produce the mesh with precise dimensional control. The product can result in considerable savings in time, labour and money.

The welded wire mesh is a metal wire screen that is made up of low carbon steel wire or stainless steel wire. It is available in various sizes and shapes. It is widely used in agricultural, industrial, transportation, horticultural and food procuring sectors. It is also used in mines, gardening, machine protection and other decorations.

Diameter 线径	Aperture 孔径	Width 宽度	Length 长度
2.0mm-3.0mm	25.4mmX25.4mm	1.2m	3m
2.0mm-3.0mm	25.4mmX50.8mm	1.2m	3m
2.0mm-4.5mm	50.8mmX50.8mm	2m	4m
2.0mm-6.0mm	101.6mmX50.8mm	2m	4m
2.0mm-6.0mm	101.6mmX101.6mm	2m	4m

We can be customized according to customer requirements.



护栏网 MESH FENCE

护栏网 又称为防护网，因地域性差异，南方人习惯称为隔离栅，北方人习惯叫做护栏网。我国护栏网主要分为：花园护栏网、铁路护栏网、桥梁护栏网、高速公路护栏网、体育场网、机场网等等（用途极其广泛）。按类型又分为：框架护栏网、三角折弯护栏网、双边丝护栏网、双圈护栏网、波浪形护栏网、体育场护栏网、刀片刺网—护栏网、刺绳护栏网、pvc涂塑丝护栏网等等（类型多样化）。

Welded wire mesh fence is a steel fence consisting of wire strands welded together to form a high strength mesh. Welded wire mesh fences are used predominantly as high security barriers where visibility through the fence is necessary or desirable. It is also used for animal enclosures in zoos, road fence, resistance fence, separation fence etc.

